

+/- 2,630 sq. ft. of Medical Office
100 Casa Suite B
San Luis Obispo, CA 93405

**For
Sub-Lease**

Contact:
Steve McCarty
CalBRE# 00977930

Steve Davis
CalBRE# 01843738



For Sub-Lease

- ◆ 2,630 sq. ft. of a stand-alone professional office building
- ◆ Across from Sierra Vista Hospital
- ◆ Recently Remodeled and Ready to Move Into
- ◆ Shared Ample Parking
- ◆ \$2.31/sq. ft. per month, NNN

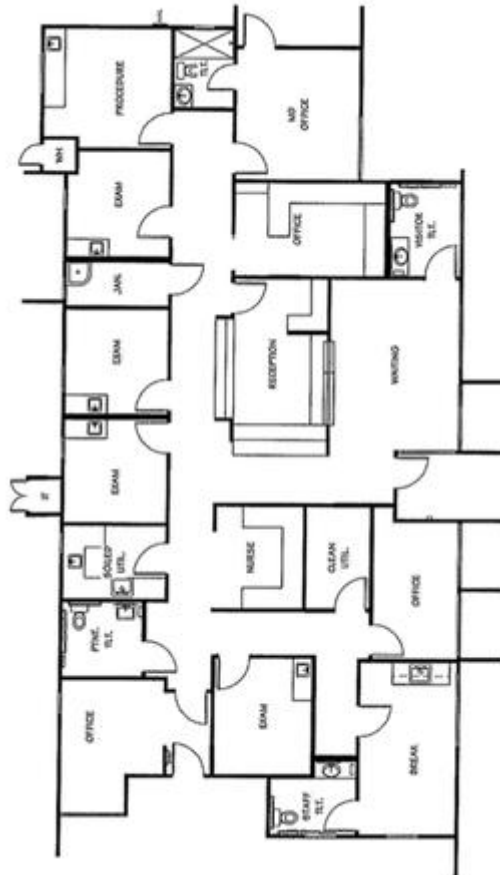
Stafford-McCarty
Commercial Real Estate
641 Higuera St., Suite 201
San Luis Obispo, CA 93401
805-543-1801
www.staffordmccarty.com



Summary

Well located in the heart of the Sierra Vista Hospital's medical district, a free standing medical office building as part of a medical cluster of buildings. Very recently remodeled with great natural light. This is offered as a sublease which had an original three year term. There is an opportunity to write a longer term lease.

Parcel Characteristics	
APN:	052-183-079
Legal Description:	Per title report
Land Use Zone:	O Office
Gross Square Feet	+/-2,630 sq. ft
Parking:	As part of common area and shared with other office buildings
Utilities:	City water and sewer



Stafford McCarty Commercial Real Estate

641 Higuera Street, Suite 201, San Luis Obispo, CA 93401 805-543-1801 (voice) 805-543-1857 (fax)
www.staffordmccarty.com CalBRE #1240829

Information contained herein has been obtained from the owner of the property or from other sources deemed reliable. We have no reason to doubt its accuracy, but we do not guarantee it.

100 Casa Suite B, San Luis Obispo, CA 93405



Stafford McCarty Commercial Real Estate

641 Higuera Street, Suite 201, San Luis Obispo, CA 93401 805-543-1801 (voice) 805-543-1857 (fax)

www.staffordmccarty.com CalBRE #1240829

Information contained herein has been obtained from the owner of the property or from other sources deemed reliable. We have no reason to doubt its accuracy, but we do not guarantee it.