

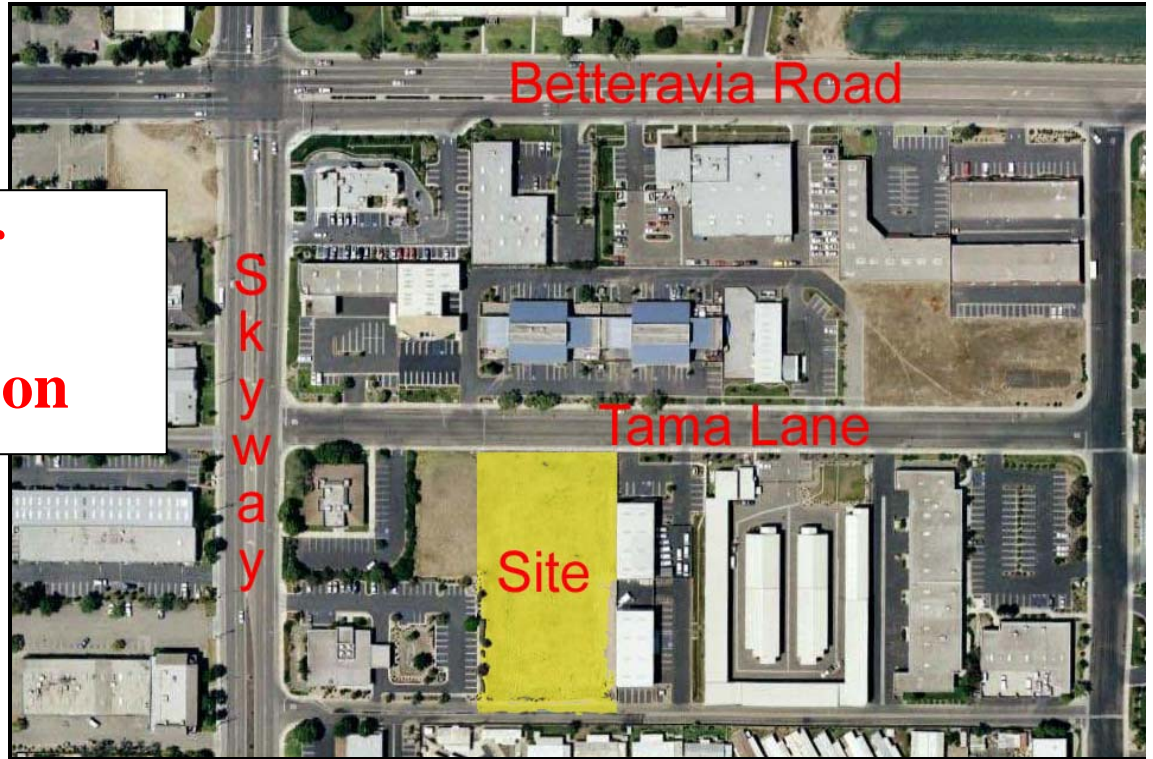
+/- 1.37 acres
Tama Lane – Santa Maria, Ca

**For
Sale**

**Further
Price
Reduction**

Contact:
Steve McCarty
DRE# 00977930

Steve Davis
DRE# 01843738



Offering:

- ◆ +/-59,677 sq. ft. Vacant Land Parcel Potential for
- ◆ Two Parcels of +/-30,000 sq. ft. each (*subject to parcel split*)
- ◆ Price Reductions from \$11.00 sq. ft. to \$5.85 sq. ft.
- ◆ Zoned M1 PD (Light Manufacturing)
- ◆ Tama Lane and Rear Alley Access
- ◆ Purchase Price \$349,000 (now \$5.85 per sq. ft.)

Stafford-McCarty
Commercial Real Estate
641 Higuera St., Suite 201
San Luis Obispo, CA 93401
805-543-1801
www.staffordmccarty.com

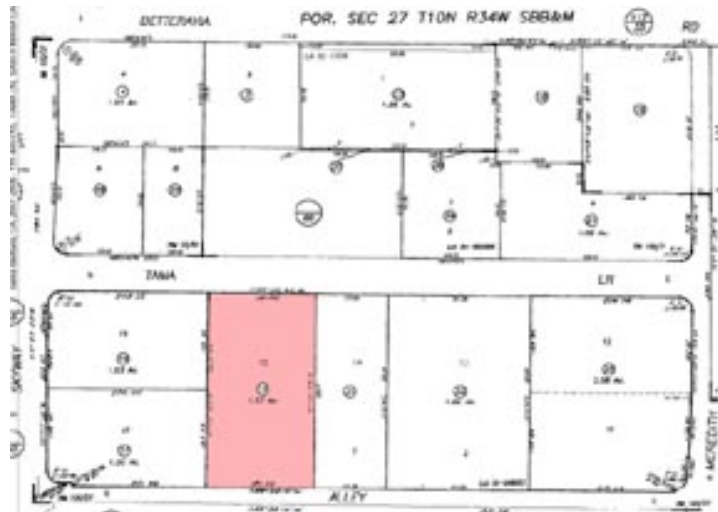


Summary

Well located industrial parcel well suited for lot-split.

Parcel Characteristics	
APN:	111-440-015
Legal Description:	Per title report
Land Use Zone	M-1 PD (Light Manufacturing)
Gross Square Feet	+/- 59,677
Utilities	Available
Subject to Lot Split: Two Parcels	Two- +/- 30,000 sq. ft. parcels

“..ownership offering a sale or a parcel split of this well located industrial parcel. A fantastic opportunity to purchase a smaller parcel in a active market”



Stafford-McCarty Commercial Real Estate

641 Higuera Street, Suite 201, San Luis Obispo, CA 93401 * 805-543-1801 (voice) * 805-543-1857 (fax)
www.staffordmccarty.com

Information contained herein has been obtained from the owner of the property or from other sources deemed reliable. We have no reason to doubt its accuracy, but we do not guarantee it.