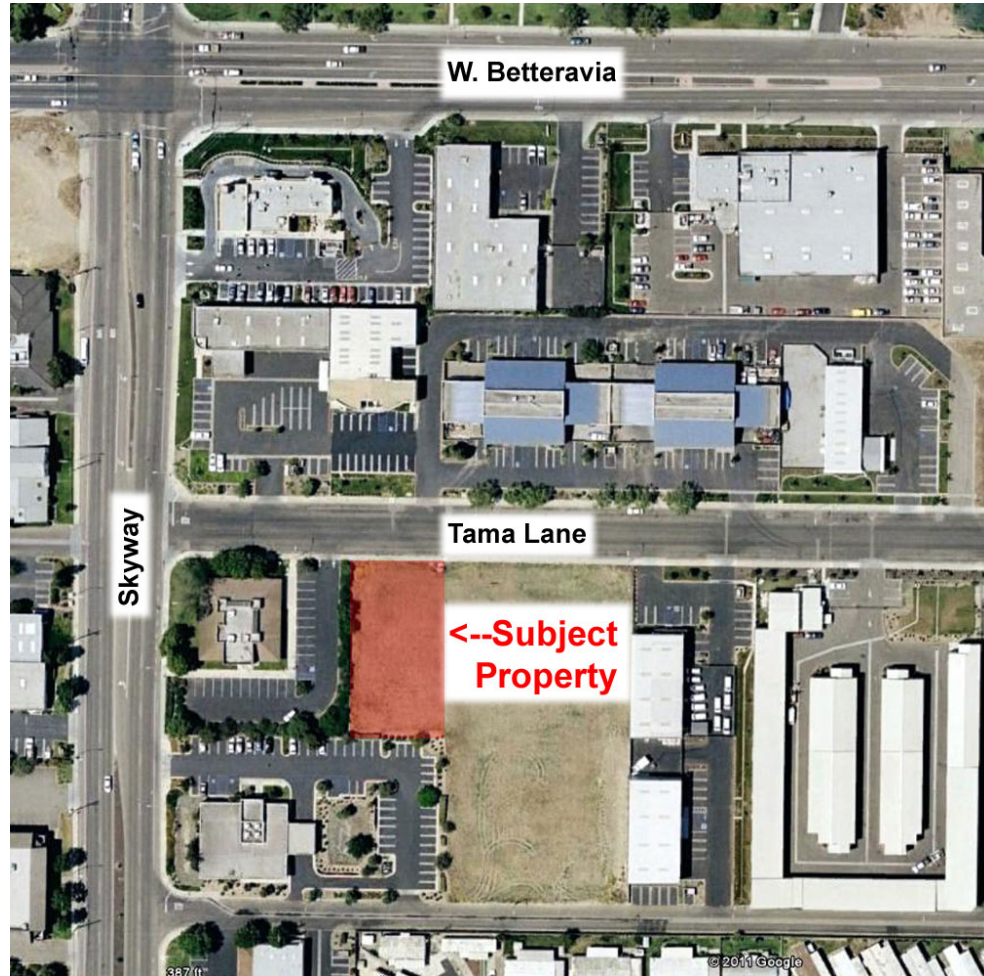


+/- 16,627 sq. ft.
Tama Lane – Santa Maria, Ca

**For
Sale**

Contact:
Steve McCarty
DRE# 00977930

Steve Davis
DRE# 01843738



For Sale

- ◆ Vacant Land Parcel, approximately 16,627 sq. ft.
- ◆ Zoned M1 PD (Light Manufacturing)
- ◆ Good circulation and access to the parcel
- ◆ \$149,500

Stafford-McCarty
Commercial Real Estate
641 Higuera St., Suite 201
San Luis Obispo, CA 93401
805-543-1801
www.staffordmccarty.com

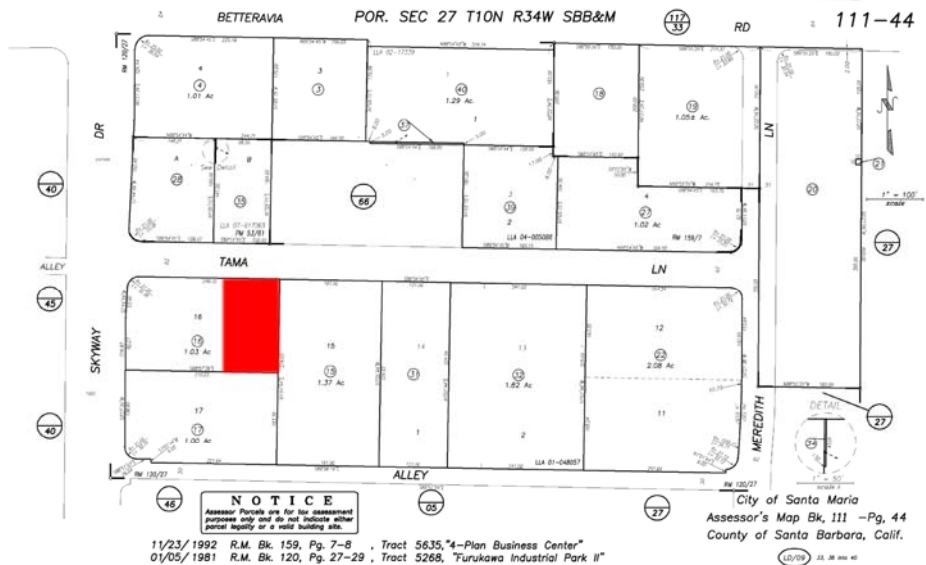


Summary

Well located, small industrial parcel.

Parcel Characteristics	
APN:	111-440-016; pending new APN
Legal Description:	Per title report
Land Use Zone	M-1 PD (Light Manufacturing)
Gross Square Feet	+/- 16,627
Utilities	Available
Lot split is complete, but no new APN or Parcel Map at this time.	
Note: Adjacent to an available +/- 1.37 acre parcel also for sale.	

"..A rare opportunity to purchase a small industrial parcel in an active market"



Stafford-McCarty Commercial Real Estate

641 Higuera Street, Suite 201, San Luis Obispo, CA 93401 * 805-543-1801 (voice) * 805-543-1857 (fax)

www.staffordmccarty.com

Information contained herein has been obtained from the owner of the property or from other sources deemed reliable. We have no reason to doubt its accuracy, but we do not guarantee it.