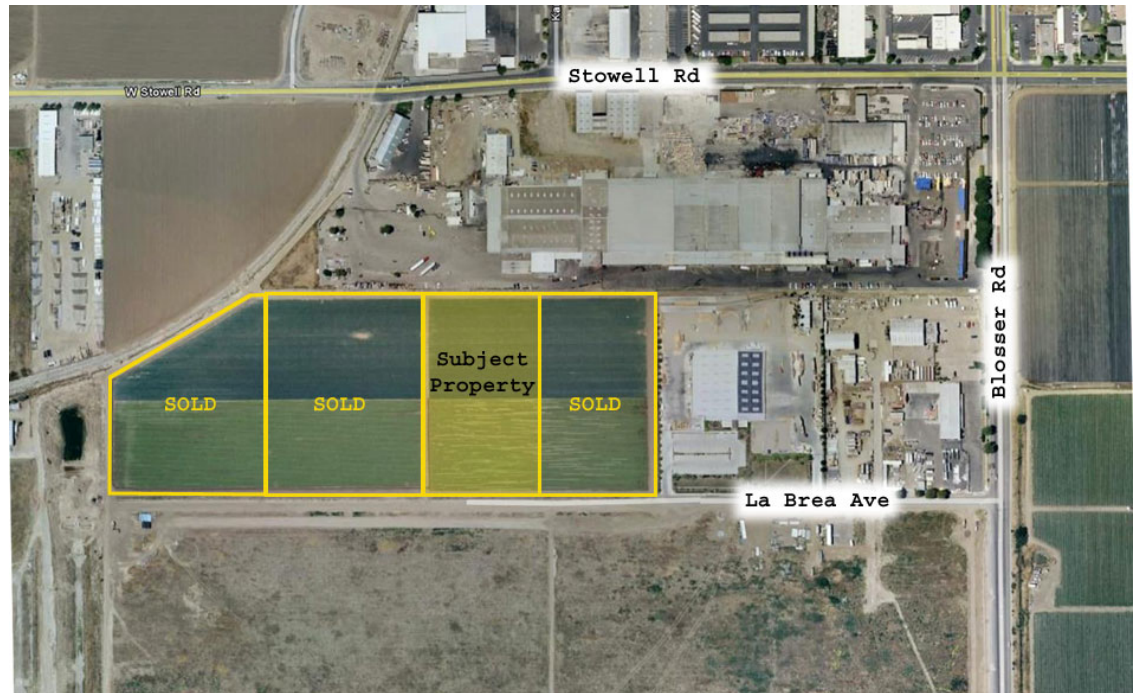


La Brea Ave. Industrial Land Santa Maria, CA

**FOR
SALE or
LEASE**

Contact:
Steve McCarty
DRE# 00977930

Steve Davis
DRE# 01843738

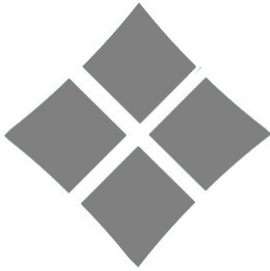


Property Features:

- ◆ +/- 5Acres
- ◆ Excellent Heart of Santa Maria Industrial Location
- ◆ Zoning (PD M2) Allowing Outside Storage and Yards
- ◆ Rail Availability
- ◆ Build to Suit and Possible Seller Carry-Back Available
- ◆ Price: \$8.00 per square foot.

Stafford-McCarty
Commercial Real Estate
641 Higuera St., Suite 201
San Luis Obispo, CA 93401
805-543-1801
www.staffordmccarty.com

“A rare opportunity to purchase property with extremely flexible uses meeting the needs of the region markets”

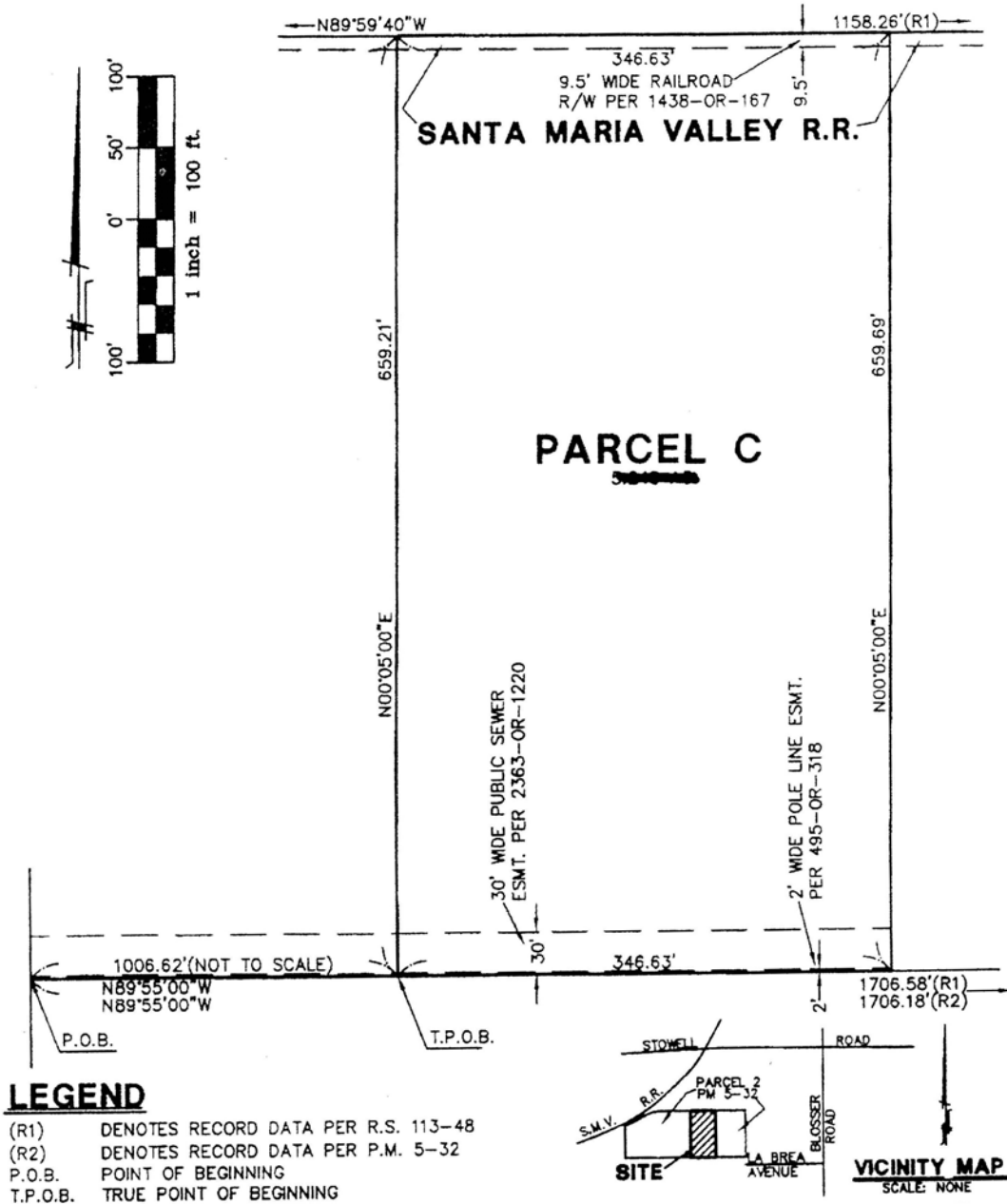


Stafford-McCarty Commercial Real Estate

641 Higuera Street, Suite 201, San Luis Obispo, CA 93401 * 805-543-1801 (voice) * 805-543-1857 (fax)
www.staffordmccarty.com

Information contained herein has been obtained from the owner of the property or from other sources deemed reliable. We have no reason to doubt its accuracy, but we do not guarantee it.

Parcel Characteristics	
APN:	117-024-023
Legal Description:	Per title report
Parcel A	Approximately 7 Acres SOLD
Parcel B	Approximately 7 Acres SOLD
Parcel C	Approximately 5 Acres \$1,742,400.
Parcel D	Approximately 5 Acres SOLD
Zoning:	M2-PD
Public Improvements	Available
Unique Property Features	Outside Storage and Rail Availability



Stafford-McCarty Commercial Real Estate

641 Higuera Street, Suite 201, San Luis Obispo, CA 93401 * 805-543-1801 (voice) * 805-543-1857 (fax)

www.staffordmccarty.com